

Welcome

Hope Moor Wind Farm
Community Liaison Group

Hope Moor Wind Farm Community Liaison Group

3 March 2026

Welcome and Introductions

Meet the Team

Project management



Kelly



Frances



Natasha



Connie



Andy



Euan



Barbara



Kayleigh



Catherine

Stakeholder engagement

Consents and Environment

Housekeeping



Please be
respectful



We may park
ideas for later
discussion



Minutes will be
shared after the
meeting

The purpose of the HMCLG

The main purpose of the CLG is to provide a constructive forum for open, honest dialogue between Fred. Olsen Renewables and parish representatives, ensuring communities are well-informed, engaged, and able to shape the Hope Moor Wind Farm project

- Give the project team and parish representatives a regular, open way to share information and updates.
- Provide a constructive space to discuss the project and ask questions, separate from formal public consultation.
- Help representatives understand the project and the planning process so they can pass on clear, accurate information.
- Ensure local views are heard and reflected as the project develops.

Our early plans for Hope Moor

An introduction to Fred. Olsen Renewables

- One of the UK's longest-established renewable energy developers, with 9 operational wind farms and 2 in construction
- Developed Scotland's first consented wind farm (Windy Standard I, 1996)
- Strong consenting track record with a pipeline of 1GW+
- Success built on community collaboration, local supply chains, and long-term sustainability
- Over £6m invested in community benefit funds across our portfolio — with further investment planned for Hope Moor



Developing



Constructing



Operating

What we're proposing

- Proposed onshore wind farm between Barnard Castle and Richmond, generating approx. 100MW of clean energy
- Could power around 81,000 homes and businesses
- Approx. 1,130 ha site with around 20 turbines (indicative), up to 200m tip height
- Supports the UK's energy security and climate goals
- Designed to be sensitive to nature, landscape, and upland moorland practices
- Will create local jobs and deliver community investment



Location

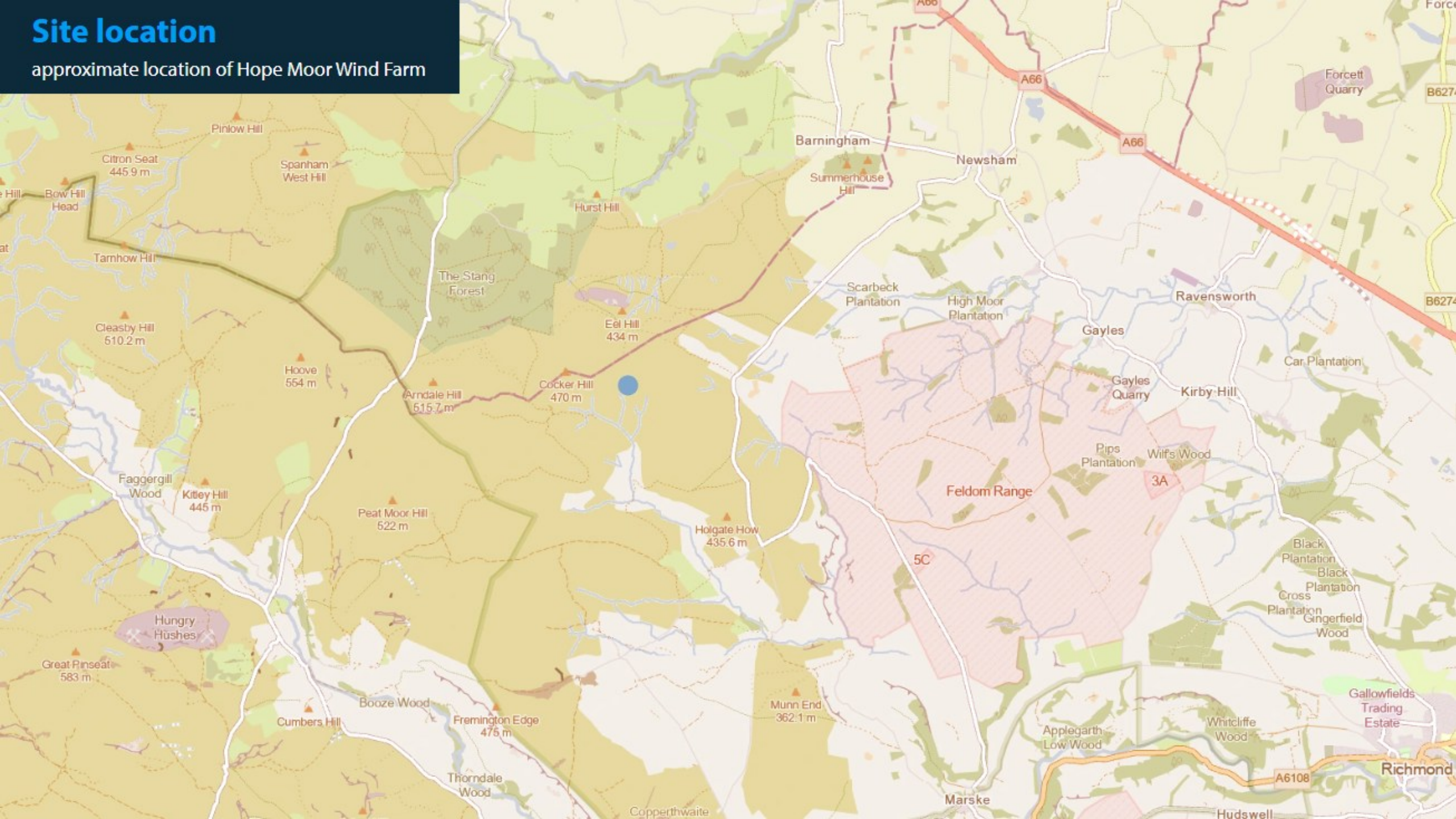
- Site chosen for its open topography and isolated setting, well-suited to wind generation
- One of the best locations in the UK for clean energy generation
- Wind farm design will be shaped by the site's wind climate
- Proposal uses modern turbine technology — favouring fewer, taller turbines for higher efficiency and output
- On-site wind monitoring is underway and will complete in 2026, helping confirm the project's generating capacity



Rothes Wind Farm

Site location

approximate location of Hope Moor Wind Farm



Community Benefits

Hope Moor will deliver long-term value to the surrounding communities through annual community benefit funding linked directly to the project's generating capacity.

What the project could offer

- £5,000 of community benefits per MW of installed generating capacity.
- With an expected output of around 100 MW, Hope Moor would provide approximately £500,000 per year in community benefit funding.

Your feedback will directly inform how community benefit funding is allocated.

Previous projects and funding

We are committed to working with local communities to build community benefit funding that aligns with local priorities. For our other projects, this has included

- Environmental improvement schemes
- Heritage projects
- Local renewable energy and energy-efficiency programmes
- Local energy discount scheme
- Funding for swimming lessons for all local children

Jobs, Skills and Economic Opportunities

- Creation of construction-phase and long-term operational roles.
- Training opportunities and apprenticeships supported through partnerships with local colleges and skills providers.
- Opportunities for local businesses and suppliers to participate in the project's supply chain.
- Wider economic benefits through local spending, services, and long-term investment.

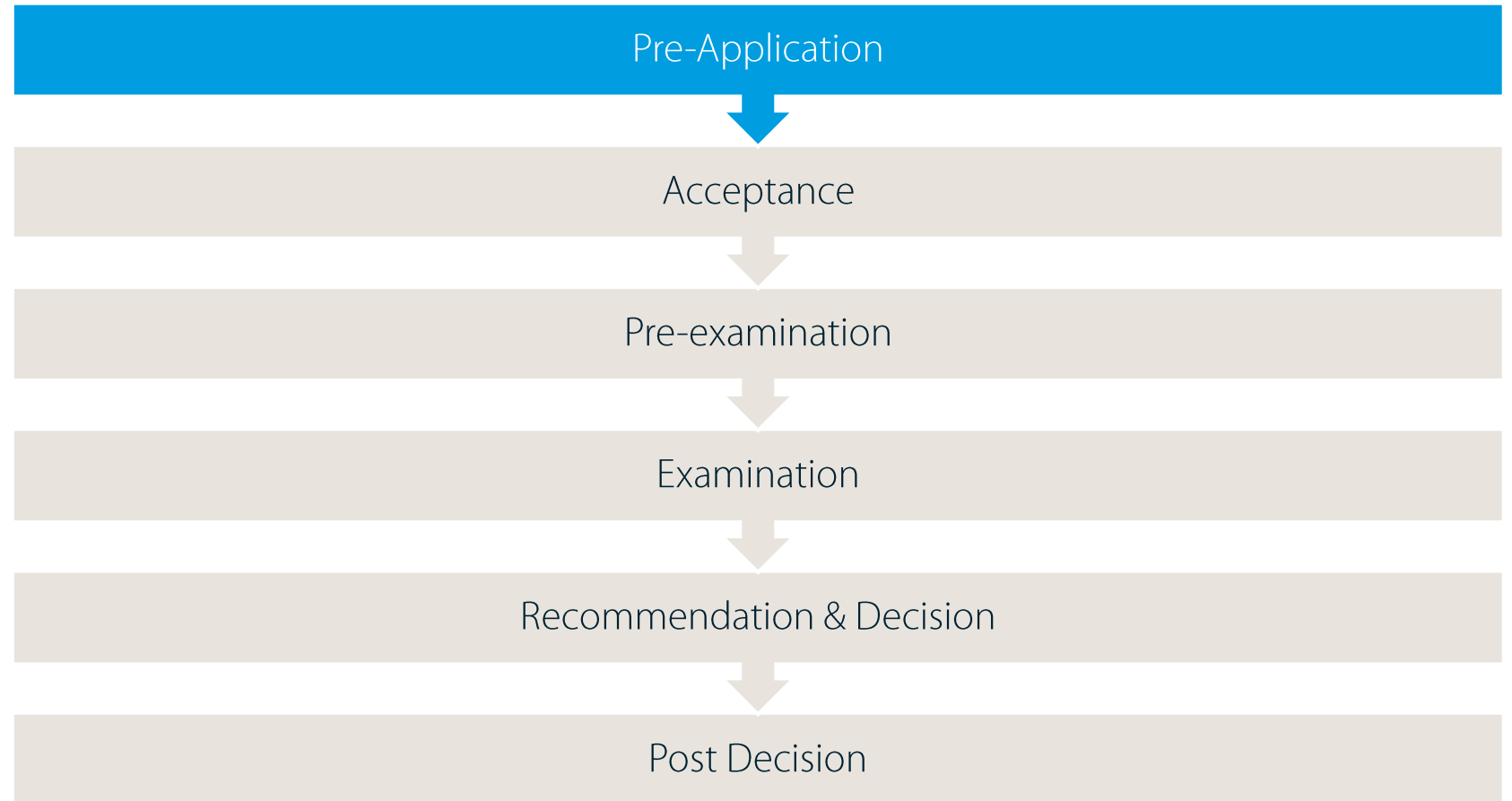
Again, we are committed to working with local communities on how the project can support and enhance the local economy and skills.

We are also keen to support traditional rural skills with this project.

The Consenting Process

The NSIP Process

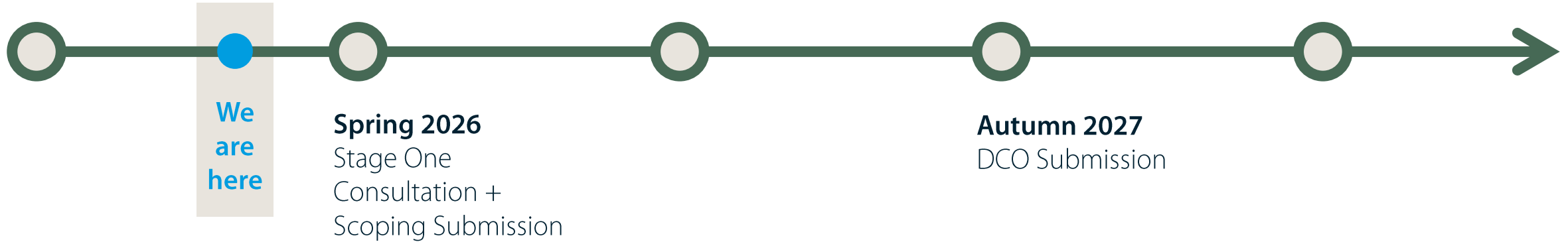
- Last year, we received a Section 35 Direction from the Secretary of State, which designated Hope Moor as a Nationally Significant Infrastructure Project (NSIP).
- We will discuss shortly how we will gather and respond to local feedback
- There are six stages of the consenting regime for NSIPs:



Our rough timeline

Summer 2025

Initial planning work on the project



Public Consultation and Scoping

Fred Olsen Renewables

Public Consultation

Purpose: To gather views from local communities, landowners, statutory bodies, and other stakeholders so the developer can refine and improve proposals before submitting the DCO application.

- Anyone who is interested in the project will be able to see our consultation documents (brochure, maps, public information events etc) and provide feedback via:
 - Paper feedback form (at events, or posted via Freepost)
 - An online feedback form
 - Email
- Feedback will be consolidated and responded to in a consultation report

There will be two rounds of public consultation. These are the best time for local people to influence the proposals.

The Planning Inspectorate (PINs)

Scoping Consultation

Purpose: To consult relevant statutory environmental bodies on what environmental topics, surveys and assessments the developer's Environmental Statement (ES) must include.

- Developer submits a Scoping Report describing the project and the topics they propose to assess.
- PINS consults statutory consultees (e.g., Environment Agency, Natural England, local authorities) on whether the scoping is sufficient.
- PINS issues a Scoping Opinion to the developer, setting out what must be included in the Environmental Impact Assessment (EIA).
- This ensures the environmental assessment covers all relevant issues before the developer prepares the full ES.

Public Consultation and Scoping

Fred Olsen Renewables

Public Consultation

Purpose: To gather views from local communities, landowners, statutory bodies, and other stakeholders so the developer can refine and improve proposals before submitting the DCO application.

- Anyone who is interested in the project will be able to see our consultation documents (brochure, maps, public information events etc) and provide feedback via:
 - Paper feedback form (at events, or posted via Freepost)
 - An online feedback form
 - Email
- Feedback will be consolidated and responded to in a consultation report

These two rounds of consultation are the best time for communities to influence the scheme

The Planning Inspectorate (PINs)

Scoping Consultation

Purpose: To consult relevant statutory environmental bodies on what environmental topics, surveys and assessments the developer's Environmental Statement (ES) must include.

- Developer submits a Scoping Report describing the project and the topics they propose to assess.
- PINS consults statutory consultees (e.g., Environment Agency, Natural England, local authorities) on whether the scoping is sufficient.
- PINS issues a Scoping Opinion to the developer, setting out what must be included in the Environmental Impact Assessment (EIA).
- This ensures the environmental assessment covers all relevant issues before the developer prepares the full ES.

Public Consultation and Scoping

Fred Olsen Renewables

Public Consultation

Purpose: To gather views from local communities, landowners, statutory bodies, and other stakeholders so the developer can refine and improve proposals before submitting the DCO application.

- Anyone who is interested in the project will be able to view consultation documents (brochure, maps, public information events etc) and provide feedback via:
 - Paper feedback form (at events, or posted via Freepost)
 - An online feedback form
 - Email
- Feedback will be consolidated and responded to in a consultation report

These two rounds of consultation are the best time for communities to influence the scheme

The Planning Inspectorate (PINs)

Scoping Consultation

It's important to know that scoping is not where decisions are made about the project. The best way to influence the proposals is to provide feedback directly to us during consultation - this is the part of the process we control, and every relevant submission is reviewed and considered

- This ensures the environmental assessment covers all relevant issues before the developer prepares the full ES.

Engagement and Public Consultation

Early Engagement

- Engagement with land users, groups & communities
- Early engagement with councils, MPs, parishes
- Project launch & notifications
- Drop-in sessions (Nov 2025)
- **Establishment of Community Liaison Group**
- Ongoing information provision

Stage One Consultation Spring 2026

- **Early proposals**
- Six weeks of consultation
- Wider advertising of consultation in local news, social media etc
- In-person events and webinars
- Information will be shared on the project website
- Feedback submitted via online/hard copy forms, as well as over email
- Full feedback report

Stage Two Consultation Winter 2026

- **Refined proposals**
- Six weeks of consultation
- Wider advertising of consultation in local news, social media etc
- In-person events and webinars
- Information will be shared on the project website
- Feedback submitted via online/hard copy forms, as well as over email
- Full feedback report

Q&A and suggestions for next meeting

Thank you for joining us.

info@hopemoor.co.uk

0800 138 9192